



Robert Wood Johnson Foundation Health & Society Scholars Program



FALL NEWSLETTER  
November 2012

Headline News

Volume 6, Issue 1

Meet our Associate Directors

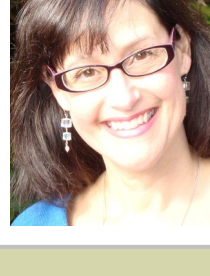


Bob is Professor and Chair of the Department of Epidemiology and Biostatistics and the Associate Director and Director of Population Sciences for the UCSF Helen Diller Family Comprehensive Cancer Center [read more](#)

**Robert A. Hiatt, MD, PhD**  
Professor and Chair of the Department of Epidemiology and Biostatistics

Barbara is Associate Professor of Public Health Nutrition in the Division of Community Health and Human Development, School of Public Health, UC Berkeley [read more](#)

**Barbara Laraia, PhD, MPH, RD**  
UC, Berkeley, Associate Professor



Scholars

Meredith Barrett presented, "Exploring asthma riskscape with spatially explicit, real-time data: application of a novel health technology to assess the effect of climate change on asthma," at the EcoHealth Conference for the *International Association for Ecology and Health* in Kunming, China.

Meredith spearheaded an effort to initiate a special student-driven perspectives section within EcoHealth, the journal managed by the International Association for Ecology and Health. She and her colleagues wrote the first piece which came out in time for the biennial conference. [read article](#)

Faculty

Irene Yen became an Associated Editor at the *Journal of Epidemiology and Community Health*.

Annaliese Beery, Darlene Francis and Elissa Epel have published a new paper on an experiment designed to test the effects of long-term stress on telomerase in a way that could not be done in humans but should inform our understanding of human studies. [read article](#)

Featured Publications

Article by Olivier Humblet, et al from *Environmental Health Perspectives*

"Genetic Modification of the Association between Peripubertal Dioxin Exposure and Pubertal Onset in a Cohort of Russian Boys" [read article](#)

Article by Janet Tomiyama, Eli Puterman, Elisa Epel, David Rehkopf and Barbara Laraia from *Annals of Behavioral Medicine*

"Best Practice Guidelines for Monitoring Socioeconomic Inequalities in Health Status: Lessons from Scotland" [read article](#)

Article by Nancy Adler, Nicki Bush, et al from *Proceedings of the National Academy of Sciences (PNAS)*

"Rigor and vigor in studies of health disparities" [read article](#)

Article by Tom Boyce, Nicki Bush, Nancy Adler, et al from *Proceedings of the National Academy of Sciences (PNAS)*

"Social Stratification, Classroom 'Climate' and the Behavioral Adaptation of Kindergarten Children" [read article](#)

Alumni Corner

Aric Prather's study showing how the length of a person's sleep can be a predictor of the body's response to vaccines makes news in the *San Francisco Chronicle*. [read interview](#)

Belinda Needham is now a research assistant professor in the Department of Epidemiology, School of Public Health at the University of Michigan.

Mark Pachucki joins the faculty of the Mongan Institute for Health Policy and Center for Child and Adolescent Health Research and Policy at Massachusetts General Hospital in 2013.

Upcoming Events

CORE SEMINAR SCHEDULE

UC SAN FRANCISCO PROGRAM SITE

NOVEMBER 29

Scholar Presentations

Location: UC San Francisco, Conference Room, 474

Time: 12:00 - 1:30 pm, [Map](#)

UC BERKELEY PROGRAM SITE

DECEMBER 6

Scholar Presentations

Location: UC Berkeley, University Hall, Room 714C

Time: 12:00 - 1:30 pm, [Map](#)

COAST SEMINAR SCHEDULE

NOVEMBER 16

*Optimal Diets for Longevity The Science, Not the Hype*

So, what is a Paleolithic Diet, and how can it help me?

**Lynda Frassetto, MD**

Health Sciences Clinical Professor, School of Medicine  
University of California, San Francisco

*The Art and Science of Nutritional Ketosis*

**Stephen Phinney, MD, PhD**

Professor of Medicine, Emeritus  
University of California, Davis

*The Power of Personalized Lifestyle Changes*

**Dean Ornish, MD**

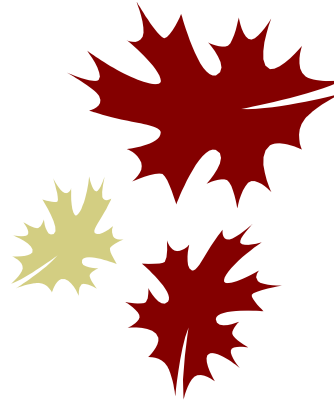
Clinical Professor, Department of Medicine  
University of California, San Francisco  
Prevention Medicine Research Institute

Please [RSVP](#) Space is limited.

**Website:** [COAST](#)

**Location:** UCSF Laurel Heights, Conference Room 474, [Map](#)

**Time:** 12:30pm – 2:30pm



News Archive

Website Resources Quick Links

For future UCSF Center for Health and Community (CHC) Affiliate Events, please visit:  
<http://www.chc.ucsf.edu/events.htm>

To remove your name from our mailing list, please [click here](#)

**Email** your QUESTIONS, COMMENTS and SUBMISSIONS to [hss@chc.ucsf.edu](mailto:hss@chc.ucsf.edu)

**Website:** [www.hss.ucsf.edu](http://www.hss.ucsf.edu)